

# Webb Core 1" x 4'-0" x 4'-0" Walkable Ceiling Panel

Panels have been designed to be incorporated into a 2" gasketed extruded ceiling system supported by all thread rods capable of supporting design loads as specified below.

## Strength and Durability

Utilizing a 1" overall thickness panel and a 3/4" cell .003 lightweight aluminum honeycomb core can assure a maximum deflection of .095 inches @ 437 lbs. Applied load. Maximum total load of 1,800 lbs. Per ASTM 72-95, modified per attached NGI testing dated September 17, 1998, project No. PT-97-0112c.

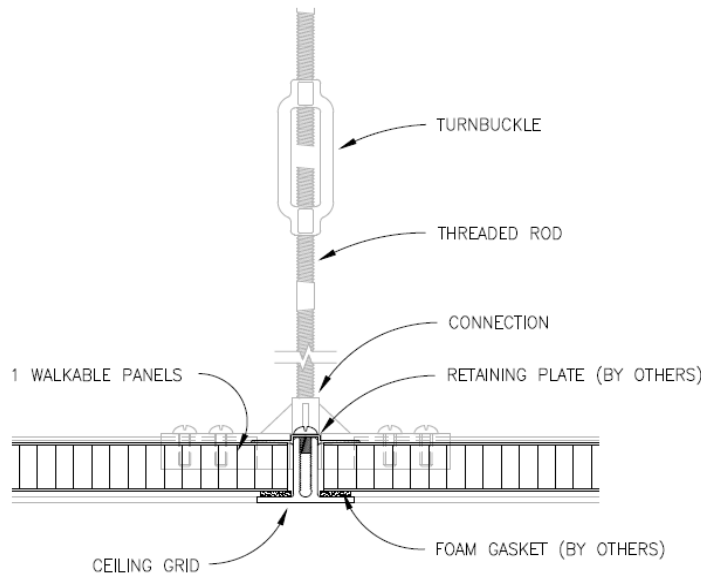


Fig. 1  
1" Panel Cross Section @ Ceiling Grid

## High Gloss Polar White Epoxy

Product Code	DC 450W2001	Minimum Pencil Hardness	H+ Eagle Turquoise
Product Type	Epoxy/reverse roll coat	Solvent Resistance	50+ Double Rubs, Mek
Intended End Use	Interior Wall Panels	Reverse Impact	1.5X MT THX IN. Lbs.
			No tape lift off
Chemical Resistance:	Available upon request	Weight	Approx. 2.1 lbs./ Sq. Ft.
Laboratory: 60 Gloss	80+		
Production: 60 Gloss	80+	Issue Date 09/02/2011	

(Ceiling access must be limited to authorized personnel only, and thereby uses appropriate live loads. Loads are consistent with those required by the U.B.C. Durable signage stating "AUTHORIZED PERSONNEL ONLY" should be posted at access points per U.B.C. 1604.5 \*1994 Edition

